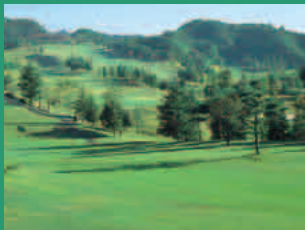




Spa Resort Hawaiians
Official Gold Course
Crest Hills Golf Club



27 holes, 9876 yards, and a par of 108



Be at harmony with nature, and take in the picturesque scenery while enjoying a round of golf. Situated in the magnificent landscape between the Abukuma Mountains and the Pacific Ocean, the course features 27 holes that are spread out over three courses. Surrounded by lush greenery and splendid amenities, golfers are sure to perform at their very best when utilizing the course.

【Course Details】

- Club Name : Crest Hills Golf Club tel.0246-56-0111
- Address : 〒972-8336 216, Kamikamado-azashinoue, Watanabe-machi, Iwaki-shi, Fukushima
- Area : 1,500,000m²
- Scale : 27 holes/9,876 yards/ 108 par JGA Authorized
- Opening Date : 21 October 1977



East Course

Battle the Forces of Nature

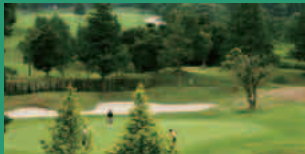
Demanding a keen strategic approach, the East Course offers the thrill and pleasure of a challenging game that golfers will no doubt relish.



Middle Course

The Challenge of Subtle Landscape Changes

A beautiful course influenced by the American style of golf.



West Course

Commune with Mother Nature

Enjoy a pleasant round of golf whilst immersed within the ambience of a lush forest.

We offer exclusive packages for golf players!

※ Contact us for more details!

access Estimated Travel Time (by car)

From Tokyo	Approximately 1 hour and 50 minutes (首都高連6号線) = 三郷I.C.(常磐自動車道) = いわき湯本I.C.(常磐自動車道)	It's closer than you think! Just a short drive away!
From Utsunomiya Takasaki	北関東自動車道・上三川I.C.: Approximately 1 hour and 30 minutes 上三川I.C.(北関東自動車道) = 友部JCT.(常磐自動車道) = いわき湯本I.C.(常磐自動車道)	
From Sendai	Approximately 2 hours and 10 minutes 仙台宮城I.C.(東北自動車道) = 郡山JCT.(磐越自動車道) = いわきJCT.(常磐自動車道) = いわき湯本I.C.(常磐自動車道)	4,000円 FREE



Spa Resort
Hawaiians

Spa Resort Hawaiians

〒972-8326 50, Warabidaira, Fujiwaramachi, Joban, Iwaki-shi
Fukushima 972-8326, Japan
Local Call Center tel.0570-550-550
Tokyo Call Center tel.0570-550-500

※ Details provided in the pamphlet were last updated on 1 December 2015.



**Spa Resort
Hawaiians
Information**

English Version

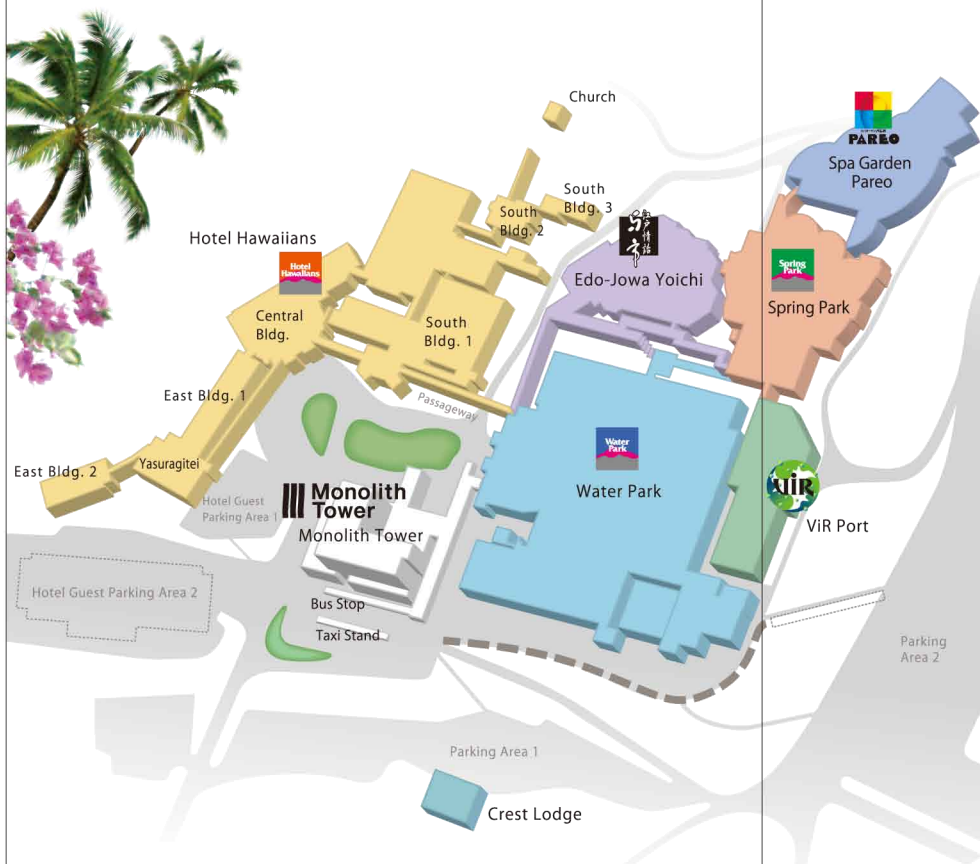


**The world's largest open-air bath,
set in picturesque Edo.**



5 Theme Parks. 4 Hotels.

A hot spring paradise where the fun never ends.



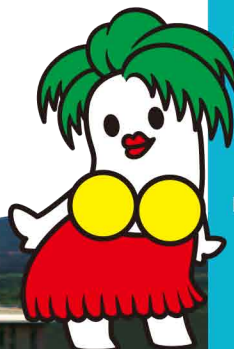
■ Kizuna Resort (Bonding Resort)

A place for all generations to congregate, sharing happiness and a multitude of life experiences. Kizuna Resort is somewhere you can enjoy for the entirety of your life, no matter how old you are!

■ CoCo Nee-san

CoCo Nee-san (One of the Japanese honorifics for older sister) is a fairy born from the seed of a coconut tree. She lives somewhere in the Water Park, and suddenly appears from time to time to dance in front of guests. She is the first original character from Spa Resort Hawaiians.

CoCo Nee-san
Coco Nee-san



CONTENTS

Watch! Shows	<ul style="list-style-type: none"> ● Polynesian Grand Stage ● Polynesian Sunlight Carnival ● "Kizuna" Message Light Show 	3
Play! Theme Parks	<p>Water Parks</p> <ul style="list-style-type: none"> ● Big Onsen Pool ● Water Slider ● Waiwai Ohana ● Fish-go-round ● Aloha Town ● Hula Museum <p>Spa Garden Pareo</p> <ul style="list-style-type: none"> ● Blue Zone ● Red Zone ● Yellow Zone ● Green Zone ● Panorama Sauna <p>Spring Park</p> <ul style="list-style-type: none"> ● Spring Town ● Palace Hot Springs ● Plaza 	5 7 9
Relax! Hot Springs	<p>Edo-Jowa Yoichi</p> <ul style="list-style-type: none"> ● Open-air Bath ● Kakeyu ● Herbal Sauna ● Shadow Play ● Massage Salon ● Gift Shop 	10 11
Glow!	<p>Exercise and Este</p> <p>Studio Exercise</p> <ul style="list-style-type: none"> ● Aloha Enjoy Hula ● Iaorana Tahitian Dancing ● Let's Shape Up ● Yoga Stretch <p>Aqua Exercise</p> <ul style="list-style-type: none"> ● Aqua Relaxation ● Aquabics ● In-water Walking <p>Aesthetics Relaxation</p>	13
Savor!	Restaurants	14
Stay! Hotel	<p>Monolith Tower</p> <p>ViR Port</p> <p>Hotel Hawaiians</p> <ul style="list-style-type: none"> Yasuragitel Convention Hall (Lapita) Sample Schedule <p>Crest Lodge</p>	15 17 20
Buy!	Shops	21
Explore!	<p>Sightseeing</p> <ul style="list-style-type: none"> Travel Concierge Information About our hot springs 	22
Try!	Crest Hills Golf Club	23

Free Wi-Fi is available for use in the following areas:

- Hotel Hawaiians Front Lobby/Lapita Lounge
- ViR Port Front Lobby
- Monolith Tower Front Lobby/First Floor
- Spring Park Plaza



Be moved to tears by the graceful and radiant of our artistes.

■ Polynesian Grand Stage



■ Polynesian Sunlight Carnival



■ "Kizuna" Message Light Show

Let your breath be taken away by the lithe hula and passionate Tahitian dances! Be enthralled by the magical world created using the latest in lighting and stage effects. The dynamism of the panoramic beach theatre will be sure to overwhelm your senses.

Watch!
Shows





Revel in the tropical mood of the all-weather dome.

Wonder Horn



Water Slider



Wonder River



Wonder Black



Friendship Canyon



Paradise Cove



Aquarium Pool
Fish-go-round
Swim and roam alongside beautiful southern fish in Japan's very first aquarium pool.



Hula Museum
Look! Learn!
Interact!

Learn about Hula from the numerous exhibits present in this immersive museum experience.

The warm rays of the sun filter through the crystalline dome, illuminating the dense foliage of the tropical greenery. Purvey the eye view of Aloha town. Enjoy the privilege of unchanging weather and UV protection under the shelter of the all-weather dome.

Play!

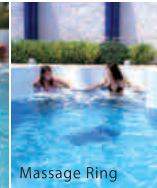
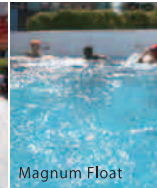
Theme Parks





Beneath azure skies, a hot spring garden girdled in flora.

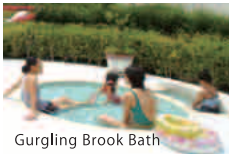
Blue Zone Jacuzzis Galore



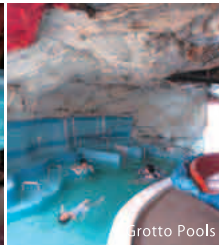
Yellow Zone Friends and Family



Green Zone Flowers and Greenery

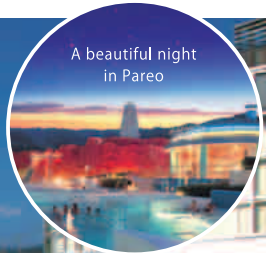


Red Zone Play with Passion



Enjoy soaking in the warm pools while bathing in the golden sunlight. As the sun sets, become mesmerized by the majestic night scenery as the stars come out to play. Appreciate the thematic essence of each sector, Healing (Blue), Activity (Red), Romance (Yellow), and Refreshment (Green) in your favorite bathing suit.

Play!
Theme Parks



A beautiful night in Pareo

Panorama Sauna



A luxurious oasis of European and Japanese influence

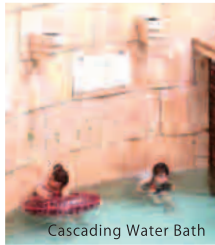
■ Spring Town



Jacuzzi



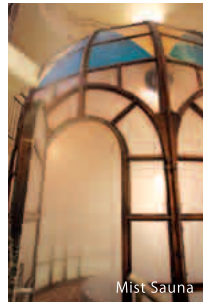
Ondol Bath



Cascading Water Bath



Reclining Bath



Mist Sauna

■ Palace Hot Springs



Cypress Wood Bath



Open-air Bath



Granite Bath

■ Plaza



Put on your favorite bathing suit and delve into the ambience of a quaint European town while relaxing in the soothing waters of a hot spring. For the more authentic Japanese hot spring experience, go nude in the Palace Hot Springs.

Play!
Theme Parks

Relax!
Hot Springs





The world's largest open-air

bath, set in picturesque Edo.

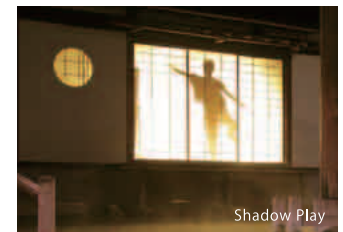
Edo-Jowa Yoichi



Achieve a state of blissful relaxation with a combination of seasonal herbs and hot spring steam

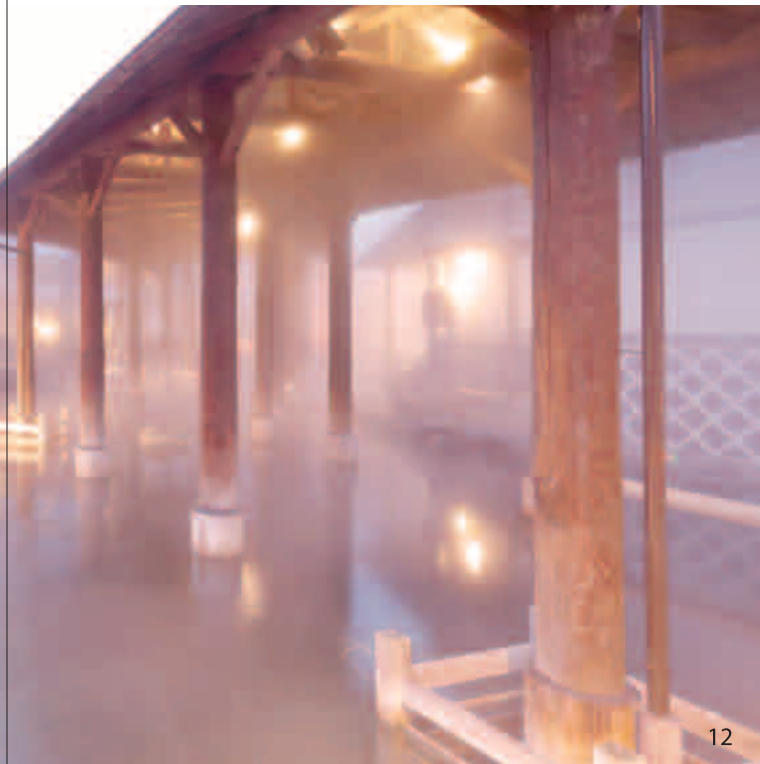


Scenes of elegant dances enthrall and amaze bathers as they immerse themselves in the hot springs



A towering ceiling, alabaster walls, midnight pillars, and soft wooden floors. After passing through the tranquil recreation of the Edo townscape, a colossal open-air bath beyond the limits of one's imagination steers into view. Relax your body and soul in a flashback to simpler days.

Relax!
Hot Springs





Keep Fit. Stay Beautiful.



Refresh your body and soul with a combination of the relaxing powers of the hot springs and original dance routines created just for you here at Hawaiians.

Studio Exercise (Spring Park 5F)



Aloha Enjoy Hula



Iaorana Tahitian Dancing



Let's Shape Up

★There are other yoga stretch exercises available

Aqua Exercise (Base Stage @ ViR Port 1F)



Aqua Relaxation



Aquabics



In-water Walking

Aesthetics



Lomilomi Massage & Total Beauty (Aloha Lomi @ ViR Port 2F)

Korean Style Deep Skin Cleansing (Palace Hot Spring @ Spring Park 3F)

Relaxation



Relaxation Salon (Alohas @ Spring Park 2F)

Yoichi's Winding Down Massage Spot (Edo Jowa Yoichi)



Gourmet Treats

From tropical dishes to traditional Edo-style noodles, buffets and fast foods, one can find anything to sate their appetites!



Water Park

Amusement Pavilion

- Palm (Buffet Restaurant) Enjoy the buffet with your favorite bathing suit!
- Rest Kitchen (Snacks and Ramen Noodles) Famous for its popular ramen and curry.
- Food House (3rd Floor) Try the Fukushima pork bowl and southern island float!

Luau Food Court (Aloha Town 1F)

- Diamond (Hamburger Shop) The fast food chain that represents our resort!
- Kokoleka (Drinks and Sweets) The crepe is a must-have!
- Laulau (Hawaiian Food) Have you tried Locomoco before? Try it at this Hawaiian restaurant!
- Margarita (Pizzeria) Renowned for their special pizza oven!
- Hauori (Curry Shop) All ages will enjoy the curry sold at this specialty shop!
- Pao (Ice Cream Shop) Have ice cream at -40 degrees, along with the new sensation of our curly smoothie!
- Pao (Dessert Paradise) Sells the only pancakes in Hawaiians. Their original pancakes are top sellers!

Luau Food Court (Aloha Town 2F)

- Paradise (Cafe & Bar) Don't miss out on the tropical cocktails!

Dessert Market Place

- Coco De (Juice Bar) Fresh juice to enhance your tropical experience!
- Maikai (Gelato Shop) Have a taste of 12 different original flavors!
- Kaua Rainbow (Dessert Shop) Don't miss their parfait, a fusion of Hawaiian traditional dessert Malasada and Hokkaido cream!



Spring Park

Plaza

- Kau Kau (Locomoco Shop) Try a different taste from Lau Lau!



Spa Garden Pareo

- Arte (Food Terrace) Hot and tasty ramen available!



Edo-Jowa Yoichi

- Yoichi Sobadokoro (Yabusoba Buckwheat Noodles) A taste from the past. Try it at least once in your lifetime!



Palm (buffet restaurant)



Diamond (Hamburger Shop)



Laulau (Hawaiian Food)



Margarita (Pizzeria)



Kau Kau (Locomoco Shop)



Sobadokoro



Enrich your stay with the taste of "Real Hawaii"

Encapsulating the concept of "Hawaiian and Spa", this tower serves as a monument to amelioration and the "Kizuna Resort"

Feel right at home in our rooms

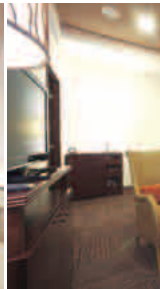
The ultimate resort adventure, where through our efforts we were able to transform our lodgings from

rooms designed to recreate the resort environment!

Through our application of the "residential guestroom" design concept, we were able to transform mere rooms to lifestyle experiences.



Hawaiian Japanese Rooms



Hawaiian Original Rooms



Lofts



Family Loft Rooms



Suite Rooms



Junior Suite Rooms



Connecting Rooms



Universal Rooms

Stay!
Hotels



すみの湯



うずの湯

100% Pure Sulfur Springs

Enjoy two baths unique in their breath-taking beauty. Both the angled bath and helical bath are at your disposal for rest and relaxation.

A new style of buffet where the food is prepared before your eyes

Feast upon courses of delicacies inspired by the travels of our chefs to exotic lands, lovingly prepared in a decidedly tropical atmosphere.



French Polynesian Buffet (Nesia)



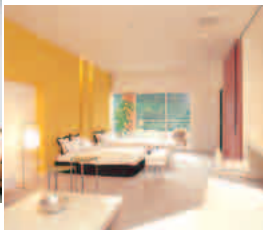


Experience the majesty of a luxury liner

The ambience of the French Riviera on the Mediterranean Coast. An atrium bathed in soft sunlight.



Cabins (Standard Rooms)



Suite Cabins



Atrium

Immediate access to the swimming area

Soaring ceilings and expansive spaces! Guests are able to head directly to the pools in their swimsuits.



Latio 4-2-2 Resort Buffet

Dine in relaxed luxury

Chose from 35 different main dishes over 3 different cuisines.



Grand Communal Bath

Sulfur Springs

With the beautifying effect of sulfur water, women looking to improve their skin will take great delight in enjoying the grand communal bath.



Japanese-styled rooms for large families!

Hotel Hawaiians



Whatever your needs, our huge variety of rooms will definitely satisfy you!

Stay!
Hotels



Japanese-Style Rooms
(With or Without Bath)



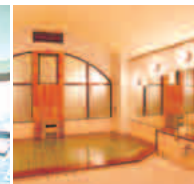
Japanese-Western Style Rooms



Yu-no-Take Central Bldg.
Communal Bath



East Bldg. 2
Communal Bath



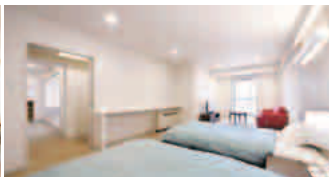
South Bldg. 2
Communal Bath

Perfect for all generations!

With over 290 guest rooms ranging from fully Japanese-styled rooms to rooms designed using an amalgamation of Japanese and Western styles, Deluxe and even Family Suites, you will definitely find accommodations that suit your fancy.



Family Suites (Two Japanese Rooms)



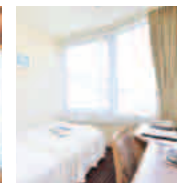
Family Suites (Japanese + Western Rooms)



Special Suites



Deluxe Suites



Single Rooms

Relax your body and soul with three unique baths

Yasuragitei

Truly Luxurious Accommodations Steeped in Japanese Grace and Charm



Japanese-Western
Style Rooms

Pure Japanese Style
Rooms



Kaiseki
course meals
served in the guestrooms

With exclusive adjacently located kitchen facilities to prepare meals for guests, and lavishly decorated rooms, Yasuragitei is the height of impeccable service and sumptuous amenities.

Dinner Buffet



Serving mainly seasonal foods, try up to 50 different kinds of Japanese, Western, and Chinese cuisine.



Queen (Open-Kitchen Buffet Restaurant)

Japanese Cuisine

Party Style Dining



Mountain produce and seasonal ingredients blend together to create a uniquely Japanese culinary experience



Banquet Style



Stay!
Hotels

Sample Schedule

Day 1

- 13:00- Arrive at Hawaiians
- 13:00 Check In
- 13:30 Afternoon Polynesian show
★Explore the attractions!
- 18:00 Buffet dinner
- 20:30 Night Polynesian show
- 21:30 Open-bath @ Yoichi
- 23:00 Time for sleep



Day 2

- 7:00 Morning bath at hotel
- 8:00 Breakfast buffet
★Sight-seeing
★Massages and Relaxation
★Golfing
- 15:00 Head on home!



Convention Hall

This large-scale convention venue can handle sizeable numbers of participants in large seminars, meetings, and other major events.



Hotel Lounge

- Waikiki (Restaurant and Tea Lounge)
Spend a lazy afternoon lounging about in the tranquility of Waikiki.
- Aloha Cafe (Take out coffee shop)
Experience the taste of unadulterated Kona Coffee



Aloha Cafe

Public Corner

- Hachibe (Tavern)
Feeling hungry but don't feel like dressing up? Hachibe is casual and relaxed!
- Rairaiken (Ramen Shop)
Famous for their soup stock, we highly recommend their mysterious "black soup"
- Ginrin (Japanese Dining)
Hankering for some fresh seafood? It doesn't get any fresher than Ginrin's sushi.
- Moana (Karaoke Place)
Sing your heart out at Moana, replete with an amazing karaoke system and large screen.
- RakuRaku & Thai Style Massage (Body Care)
Replenish your trip-weary body at RakuRaku.



Hachibe



Ginrin



Japanese Style Rooms at Affordable Prices! Crest Lodge

Recommended for customers with families or golf enthusiasts!



Ease of transport!

Free shuttle bus service for hotel guests!

Tokyo - Shinjuku - Shibuya - Ikebukuro - Kitasenju - Ichikawa - Yokohama
Saitama (Shintoshin) - Matsudo - Nishifunabashi - Chiba

※ Please visit our website or contact us for more information.



Shopping is an essential part of any resort visit!

From local specialties to branded goods, tropical curios to limited edition valuables. The resort's well-stocked boutiques will satisfy your shopping desires.

Water Park

■ Entrance Hall 1F

- Hawaiians Market
The largest shopping area in the resort.
- Hawaiians Hula Girl Shop
The very first official brand shop of Spa Resort Hawaiians' Dancing Team.

■ Entrance Hall 2F

- Surfer's Paradise
From the latest swimsuit brands to swimming equipment, anything you need for the pool is here!

■ Waiwai Ohana

- Ohana Shop (Pool Accessories)
A small shop to enhance your pool experience with things like floats and goggles.

■ Amusement Pavilion 2F

- Mahimahi (Food and Souvenirs)
Conveniently located near the rest area.

■ Aloha Town 1F

- Pupulani
Accessories and goods for the pool!
- Luana (Hawaiian Select Shop)
Everything you could ever need to start Learning Hula!

■ Aloha Town 2F

- Mahalo (Resort Wear Specialty Shop)
Need some resort wear? You can find what you need right here at Mahalo!
- Konikoni (Resort Wear Specialty Shop)
We cater to kids too!

Spring Park

- Miras
Get your drinks and snacks here!

Edo-Jowa Yoichi

- Yoichi's Souvenirs
Get your fix of Japanese-styled products at Yoichi's!

Monolith Tower

■ Monolith Tower 1F

- Monolith Shops
High-quality goods imported directly from Hawaii.

Hotel Hawaiians

■ Central Bldg. 1F

- Pana Pana (Hotel gift shop)
Specialties from both Hawaii and Iwaki!
- Select Shop
Affordable Hawaiian accessories and bags.



Hawaiians Market



Surfer's Paradise



Pupulani



Konikoni



Miras



Yoichi's Souvenirs



Monolith Shops



Pana Pana

The vibrancy of the surrounding area is sure to astound! Why not take some time to explore this rich neighborhood



Aquamarine Fukushima



Iwaki La La MiU



Shioyasaki Lighthouse and the Monument of Misora Hibari, a quintessential Showa Era singer and actress.



Horuru (The Iwaki Coal and Fossil Museum)

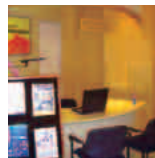


Miharu Takizakura (Ancient Cherry Tree)



Hananuki Gorge

★ We offer various kinds of sight-seeing tours.



Travel Concierge Information

This specialized desk provides support for a wide range of services, including (but not limited to) renting cars, information on the surrounding area, and reserving taxis.

Operation Hours 9:30~14:00

★ This service is closed from 11:30~12:30 on Saturdays and other specially designated days.

Hotel Hawaiians 1F Front Desk

Spa Resort Hawaiian's Hot Springs

The source of the spa is Iwaki Yumoto Hot Spring, one of Japan's top 3 iconic hot spring resorts. The water from this spring is a mixture of fossil seawater and deep-sea water that has had no contact with air for 20,000 to 30,000 years. Hawaiians uses a state-of-the-art pipe transport system that limits contact between the water and the air, allowing for guests to experience the water in its extremely fresh, natural state. Unlike other resorts, Hawaiian's does not dilute the water in its springs with tap water. Guests will be able to experience unadulterated spring water at 100% purity.

Two Types of Springs

● Sulfur Spring

As sulfur accelerates the metabolism and expands peripheral blood vessels, it is an effective treatment for diseases like diabetes and hypertension. It also has a beautifying effect on the skin by softening skin collagen.

● Chloride Spring

Owing to the body warming effects of these waters, most bathers continue to feel pleasantly snug even after emerging from the bath. Minerals such as sodium present in the water make the water buoyant, enhancing relaxation.